

PACIFICA

PACIFICA HYBRID

GRAND CARAVAN



2 0 2 3

CONTENT

PACIFICA 2 - 19

PACIFICA  
SPECIFICATIONS 20 - 21

PACIFICA HYBRID 22 - 26

PACIFICA HYBRID  
SPECIFICATIONS 27 - 29

GRAND CARAVAN 30 - 37

GRAND CARAVAN  
SPECIFICATIONS 38 - 39

*THE BEST ROAD-TRIP MINIVAN IN ITS CLASS<sup>1\*</sup>:  
IT'S THE WAY TO GO.*



\*A note about this catalogue: all disclosures can be found on the last page.

Pacifica Pinnacle™ in Brilliant Black Crystal Pearl

# BODY LANGUAGE THAT MAKES A STATEMENT.



LED HEADLAMPS



LED TAILLAMP



20-INCH POLISHED ALUMINUM WHEELS



Pacifica Pinnacle™ in Velvet Red Pearl

Giving sport-utility attitude, the assertive stance of the Chrysler Pacifica starts with the chiseled front fascia and continues with the diamond-style Gloss Black upper grille, Bright Chrome surround, slimmer lower grille and aerodynamic design. A distinctive LED taillamp runs the width of the rear fascia, providing an unmistakable rear approach, while LED headlamps and daytime running lamps deliver increased light projection and improve visibility range while turning corners.

The Pacifica Pinnacle model is particularly fluent in its expression of luxury, projecting this vehicle's upscale pedigree. The sculpted body is highlighted by distinctive accents and badging with Chrome exterior finishes and 20-inch polished aluminum wheels on gas models. Advanced onboard technology, as well as premium interior finishes and storage, take family functionality to a whole new level.

*THE MOST LUXURIOUS INTERIOR IN ITS CLASS.<sup>2</sup>*

Comfort and style are particularly rewarding in the interior of the premium Pacifica Pinnacle.<sup>TM</sup> Loaded with luxury features, the top-of-the-line trim includes durable, quilted Caramel Nappa leather-faced seats in all three rows and unique matching lumbar pillows in the second-row captain's chairs. The textured, high-quality leather extends to armrests, bolsters and the movable pillows with suede backing for an extra dose of indulgence.

*BEST-IN-CLASS STORAGE.<sup>3</sup>*

With the versatility of seven-passenger seating, the design of Pinnacle increases overall storage capacity. From the Ultra Console, covered storage and second-row in-floor storage bins, total storage on the gas-powered Pinnacle is a Best-in-Class 227.6 L (8 cu ft).<sup>3</sup> You'll also appreciate the heated and ventilated seats along with premium convenience and technology features.

*SUPREMELY SERENE.*



Pacifica Pinnacle with Premium Quilted Caramel Nappa Leather-Faced Seats and Light Diesel Grey Accent Stitching



REAR-SEAT ENTERTAINMENT WITH AMAZON FIRE TV BUILT-IN<sup>4</sup>



WIRELESS CHARGING PAD

## NEXT-LEVEL ACCESSIBILITY.

### INTUITIVE DESIGN.

Being user-friendly is key to Pacifica's popularity. Every passenger, including the driver, is kept comfortable with the available seating for eight, versatile storage, and ease of entry and exit. Together, with multi-device charging and connectivity, the available Best-in-Class Uconnect<sup>®</sup> Theatre Family Group, including Rear-Seat Entertainment with Amazon Fire TV built-in,<sup>3,4</sup> provides the ultimate in convenience to make the most of your family's drive time.

The Pacifica front-seat storage includes dual-level Ultra or Premium Consoles. A pass-through accommodates items such as a purse, tablet or laptop. The available wireless charging pad keeps your phone powered, while up to 12 available USB ports, including Type-C for faster charging, make Pacifica your family's dedicated information technology centre.

### BUILT-IN NURTURING ENVIRONMENT.

From the dual-pane panoramic sunroof to sound-absorbing laminated glass, built-in Active Noise Cancellation technology and triple-seal doors, Pacifica makes for a peacefully quiet and visually expansive environment.

Properly secure all cargo.



DUAL-PANE PANORAMIC SUNROOF



REAR-SEAT ENTERTAINMENT WITH AMAZON FIRE TV BUILT-IN<sup>4</sup>



HANDS-FREE POWER-SLIDING DOORS AND LIFTGATE

# ROLLING LIFE HACKS.



Properly secure all cargo.

SECOND-ROW STORAGE CONSOLE



SECOND-ROW EASY TILT SEATING



PACIFICA LIMITED WITH BLACK NAPPA LEATHER-FACED SEATS AND LIGHT DIESEL GREY ACCENT PIPING AND STITCHING



Pacifica Limited with Alloy Nappa Leather-Faced Seats and Black Accent Piping and Stitching

## SEATING FOR EIGHT ... WHO DO WE APPRECIATE?

The mobile family room offers available seating for up to eight,\* including a lightweight, removable second-row centre seat. Passengers can easily climb into the third row using the Easy Tilt seat feature. The second-row seats shift forward at the pull of a lever, with or without a child seat installed. Alternatively, on models equipped with second-row Stow 'n Go®, third-row passengers can simply pull the Stow 'n Go strap before entering the third row if a child seat is not installed.



### THE KEY TO SETTING LIMITS.

Ideal for families with new drivers, the available KeySense™ key fob promotes safe driving habits and limits distractions. Programmed through the Uconnect® touchscreen, the fob can limit driving speed, audio volume and block select radio channels. KeySense will also mute the audio when front seat belts are unfastened and will prevent disabling of available active safety systems.

Properly secure all cargo.\*Eight-passenger seating available on Touring-L Front-Wheel Drive (FWD) models only.



### HANDS-FREE DUAL POWER-SLIDING DOORS AND LIFTGATE.

A single kick motion under the available hands-free sliding side doors or liftgate opens the vehicle when the key fob is with you. It makes loading the car a whole lot easier, no matter what you're carrying.

Pacifica Limited S in Ceramic Grey



Pacifica Limited with Black Leather-Faced Seats and Light Diesel Grey Accent Piping and Stitching

## UP — AND DOWN — FOR ANYTHING.

### MAKE IT A REALITY.

Quite possibly, the only limit to the 243 seating and storage configurations\* on fully equipped Pacifica models is what you and your helpers can think of to do with them. With the second- and third-row seats stowed in the floor, an expansive flat cargo space can fit a stack of 4 x 8-foot sheets of plywood, turning virtually any DIY dream into a reality.

Properly secure all cargo. \*Maximum configurations available with eight-passenger seating on Touring-L Front-Wheel Drive (FWD) models only.





PACIFICA PINNACLE™ WITH BLACK FOLD-IN-FLOOR SECOND-ROW SEATS



ULTRA CONSOLE OFFERS A HOST OF STORAGE COMPARTMENTS

## STOW HAPPY ... WITH SECOND- AND THIRD-ROW STORAGE.



EASY CLEANUP WITH THE STOW 'N VAC VACUUM



IN-FLOOR STORAGE

The Chrysler Pacifica is the Only Minivan in Its Class with Stow 'n Go® fold-in-floor seating and storage for the second and third rows.<sup>5</sup> There's no struggling to remove seats — simply fold your second- or third-row seats into the floor to make plenty of space for all your cargo.

### CONVENIENCE PUTS EVERYTHING WITHIN REACH.

Use the easy-to-access in-floor bins when the seats aren't stowed to get even more storage space for all your belongings, as well as keep your valuables discreetly out of sight.

### DISAPPEARING ACT.

Whether it's crumbs, popcorn or a million little spilled pieces, cleanup is a breeze with the available, convenient, built-in Stow 'n Vac, designed to reach every corner.

Properly secure all cargo.

*ARE WE THERE ALREADY?*

*AN ENTERTAINMENT SYSTEM  
THAT MAKES BOREDOM  
A THING OF THE PAST.*

Available Uconnect® Theatre Family Group includes Rear-Seat Entertainment with Amazon Fire TV built-in,<sup>4</sup> which allows second-row passengers to enjoy a wide variety of content from streaming videos, playing games, watching downloaded Prime Video movies and shows without using data — all while on the road!



*REAR-SEAT ENTERTAINMENT WITH AMAZON FIRE TV BUILT-IN.<sup>4</sup>*

- Two seatback-mounted, dual, 10-inch, HD touchscreen displays where you can watch content individually or mirror across both displays to watch together
- Download select Prime Video movies and shows with built-in storage
- Includes two Voice Remotes with Alexa: just press and ask Alexa to easily find, launch and control content
- Built-in HDMI input and USB charging



## TUNE IN AND TURN OUT.

### PREMIUM ACOUSTICS.

The standard, built-in Active Noise Cancellation (ANC) technology subdues unwanted noise to enhance cabin quietness. It also allows for premium sound quality to be delivered through the standard six-speaker audio system.

### UCONNECT® IS YOUR COMMUNICATION CENTRE.

Your Pacifica serves up a wide range of communication and entertainment features with the standard 10.1-inch Uconnect 5 touchscreen system, including connected services that make it easy to search and navigate. With lightning-fast processing times, the system has the ability to wirelessly connect two phones simultaneously. Additionally, up to six user profiles can be personalized on the home screen, including preferences for music, seat and comfort settings as well as vehicle operation, with the push of a button.

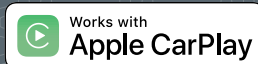
### CLEAR-CUT DIRECTIONS.

The available TomTom® Connected Navigation System<sup>6</sup> provides Connected Traffic and Travel Services and Maps-Over-the-Air (MOTA) updates. Features like predictive search and natural speech capability help identify your location as you search millions of points of interest to find what you need, wherever you are. The available Uconnect 5 NAV<sup>6</sup> system includes 3D landmarks, city models, digital terrain maps, enhanced graphics and one-step, voice-destination entry for the ultimate ease-of-use, way-finding experience.

# HIGHLY COMPATIBLE.



Advanced, in-vehicle connectivity is now available with SiriusXM Guardian. It offers a Wi-Fi Hotspot<sup>10</sup> and help when you need it most with Roadside Assistance Call<sup>11</sup> and SOS Call<sup>12</sup> from your touchscreen or rearview mirror button. The available mobile app helps to keep you connected by turning your phone into your vehicle's command centre. The one-year trial subscription<sup>14</sup> includes Remote Vehicle Start<sup>13</sup> to start your car and unlock the doors from virtually anywhere through the Uconnect® App,<sup>14</sup> as well as Stolen Vehicle Assistance alerts,<sup>15</sup> Send & Go<sup>16</sup> and much more.



A smarter, safer way to use an iPhone wirelessly inside your vehicle, Apple CarPlay seamlessly integrates it with the Uconnect touchscreen and Siri voice control.<sup>17</sup> The compatibility allows you to make calls, access music, send and receive messages, get directions optimized for traffic conditions, and more while staying focused on the road.<sup>18</sup>



TomTom® Connected Navigation System<sup>6</sup> for Chrysler Pacifica gives you a fully integrated turn-by-turn navigation experience using the most up-to-date maps, combined with traffic and connected services. Also, essential guidance information is displayed neatly on the cluster right in front of you to avoid distraction. Drivers can personalize their connected navigation system by easily creating a list of favourite locations, customizing their route preferences, and choosing which points of interest are displayed on the map and route. TomTom Connected Navigation System<sup>6</sup> provides accurate and intuitive search results with destination prediction, which offers suggestions like "Going to Work?" while showing the best route options automatically. All these features, and more, are available with an easy-to-use destination entry via voice instructions. Available.



SiriusXM with 360L<sup>7</sup> delivers the most extensive and personalized radio experience on the road. This advanced, in-car technology gives you over 300 channels of ad-free music, plus sports, news and talk for a ride that's uniquely you. The personalization features make discovering on-demand content, including podcasts, exclusive interviews and curated recommendations, easier than ever before. You can also listen wherever you go with the SXM App<sup>7</sup> included with your one-year trial. Available.



Designed with your personal safety and convenience in mind, Android Auto<sup>TM18</sup> gives you the right information for the road ahead. Connect wirelessly to easily access your favourite music with YouTube Music, and get where you need to go with Google Maps. Talk to Google on Android Auto and get things done with your voice so you can keep your focus on driving.<sup>18</sup> Easily send messages, get directions, control media and more. Just say, "Hey Google" to get started.

# ALEXA AT YOUR SERVICE.

## ALEXA ON THE ROAD.

Uconnect 5 brings Amazon Alexa built-in<sup>8</sup> to the Pacifica infotainment system, giving occupants the freedom to interact with Alexa just as they do at home or on an Alexa enabled device. With Alexa, occupants can ask to play music, podcasts and Audible; add items to their to-do or shopping list; check news, weather, traffic, sports and other real-time information; and access tens of thousands of Alexa Skills.<sup>9</sup> Responses and streaming audio are delivered through the vehicle's audio system, allowing anyone in the vehicle to easily interact with Alexa.



Certain Alexa functionality is dependent on smart home technology.

## ALEXA FROM HOME.

Use the available SiriusXM Guardian<sup>14</sup> services to command your Pacifica using your voice with the Chrysler Skill<sup>9</sup> for Amazon Alexa on an Alexa enabled device from the comfort of your home!

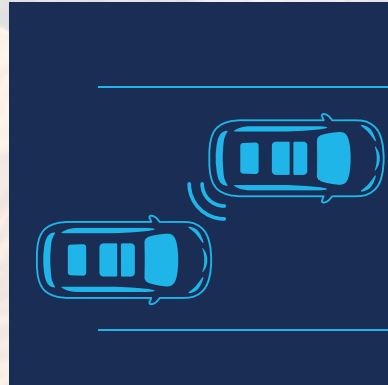
- Activate or cancel remote start<sup>13</sup>
- Remote door lock/unlock<sup>13</sup>
- Activate the horns and lights remotely<sup>19</sup>
- Check tire pressure, fuel level or oil life
- Send destinations to your TomTom Connected Navigation System<sup>6,16</sup>



# 115+

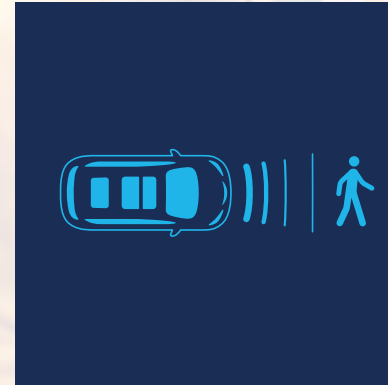
## STANDARD AND AVAILABLE SAFETY & SECURITY FEATURES.

The Chrysler Pacifica comes with over 115 standard and available safety and security features, including a host of automatically reactive technologies designed to help enhance your control and visibility even on the busiest of roads, lots and driveways.



### PARALLEL AND PERPENDICULAR PARK ASSIST.<sup>20</sup>

When activated by the driver, the available Parallel and Perpendicular Park Assist can locate a suitable parking spot and manoeuvre the vehicle into a perpendicular or parallel parking space. The automatic system will control steering-wheel manoeuvres as the driver controls the gears, brake and accelerator.

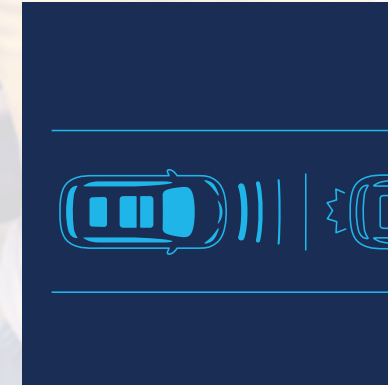


### BLIND-SPOT MONITORING.<sup>20</sup>

When driving forward, the available Blind-Spot Monitoring continually monitors the vehicle's side blind-spot zones using dual radar sensors. When a side blind spot is encroached, you're notified via an illuminated icon on the appropriate sideview mirror; if the turn signal is activated, an audible notification sounds. This system also includes Rear Cross-Path Detection<sup>20</sup> to alert you with an audible warning if vehicles or objects are in your path when driving in Reverse.

### PARK-SENSE® FRONT AND REAR PARK ASSIST WITH STOP.<sup>20</sup>

The available network of front and rear sensors sends out ultrasonic waves when driving at low speeds and provides visual and audible alerts about nearby obstacles. Park-Sense Front and Rear Park Assist with Stop can automatically apply the brakes to prevent a potential rear collision in parking situations.



### PEDESTRIAN AUTOMATIC EMERGENCY BRAKING.<sup>20</sup>

Works in tandem with the forward camera and braking system to activate when a pedestrian is in the vehicle's path and the driver has not taken action to brake. When a pedestrian is detected, the system can provide audible and visual warnings and can assist the driver in avoiding an incident by actively applying the brakes.

### ADAPTIVE CRUISE CONTROL WITH STOP AND GO.<sup>20</sup>

By using radar and camera sensors, this available system can automatically adjust cruising speed based on preset speed and vehicle distance settings. In certain conditions, such as stop-and-go traffic, the system is able to bring the vehicle to a complete stop without any driver intervention, then prompt the driver to press the Resume button or tap the accelerator to reengage to safe-range speeds as traffic begins to move.



### FULL-SPEED FORWARD COLLISION WARNING WITH ACTIVE BRAKING.<sup>20</sup>

Using radar and camera sensors, this available system detects if the vehicle is approaching another vehicle or large obstacle too rapidly. When an object is detected, the system can provide audible and visual warnings and can assist the driver in avoiding an incident by actively applying the brakes. The driver is able to adjust the sensitivity and activate brake support using the Uconnect® touchscreen multimedia centre.

### LANE DEPARTURE WARNING WITH LANE KEEP ASSIST.<sup>20</sup>

A forward-mounted camera assesses the vehicle's position within a lane. If this available system detects the vehicle is drifting out of its lane without the driver using the indicators, it can warn the driver visually and through a vibration in the steering wheel. If the driver does not respond to the warnings, Lane Keep Assist can help gently nudge the vehicle back into the lane by adjusting the steering.

## PROTECTIVE LENSES.

### *FamCAM™ INTERIOR CAMERA.<sup>21</sup>*

Peace of mind comes in many forms from Pacifica, and keeping an eye on rear-seat passengers — without turning around — is no exception. An available, headliner-mounted camera captures a full interior view behind the front row, including rear-facing child-seat occupants, letting you view the images from a split-view display and zoom-in feature on the standard Uconnect® 10.1-inch touchscreen.

### *PARKVIEW® REAR BACK-UP CAMERA.<sup>20</sup>*

When driving in Reverse, the standard ParkView Rear Back-Up Camera image is shown on the 10.1-inch Uconnect touchscreen. It includes selectable static or dynamic grid lines, adjusting as the steering wheel is turned. The wide-angle view of what is immediately behind provides confidence when backing out of parking spots and driveways.



### *360° SURROUND-VIEW CAMERA<sup>22</sup> DISPLAY.*

During low-speed driving situations like parking or backing out of your driveway, the available 360° Surround-View Camera delivers a new level of technology, providing a bird's-eye perspective of the vehicle and its surroundings on the 10.1-inch Uconnect touchscreen.

Pacifica Pinnacle™ FamCAM interior camera<sup>21</sup> on the 10.1-inch Uconnect touchscreen

## SURROUND YOURSELF WELL.



### *EQUIPPED TO PROTECT.*

Eight standard air bags<sup>23</sup> include front multistage air bags with adaptive venting technology, side-curtain air bags, driver and front-passenger inflatable knee bolster air bags, and front-seat-mounted side-impact air bags. Based on occupant size and impact severity, the front air bags open at varying levels of inflation. Side air bag inflatable curtains extend over front and rear seating rows.

### *ELECTRIC PARK BRAKE WITH SAFEHOLD.*

Activated by a button located near the Rotary E-shift dial, the standard Electric Park Brake switch eliminates the traditional pull park/emergency brake handle. It includes the additional function of SafeHold, an override feature that can secure the wheels if it detects the driver has exited the vehicle while it's at a standstill but not in the Park gear.





Pacifica Pinnacle™ in Brilliant Black Crystal Pearl

## CANADA'S BEST-SELLING ENGINE.<sup>24</sup>

### *3.6L PENTASTAR™ VARIABLE VALVE TIMING (VVT) V6 ENGINE.*

Choosing the gas-powered Pacifica means choosing the 3.6L Pentastar V6, which is both commanding and economical. This proven V6 powerhouse delivers an impressive 287 horsepower and 262 lb-ft of torque. Efficiency can be further enhanced by standard Engine Stop/Start (ESS) technology that automatically shuts off the engine as the vehicle brakes to a stop, then restarts when the brake pedal is released.

### *SMOOTH OPERATOR: THE 9-SPEED TRANSMISSION.*

The Pacifica is equipped with a standard 9-speed automatic transmission — a primary contributor to an unsurpassed gas highway fuel economy rating of 8.4 L/100 km (34 mpg).<sup>25</sup> Its unique calibration allows for outstanding vehicle launch characteristics, with quick, smooth transitions between gears. The transmission also enables lower engine rpm while cruising at highway speeds for optimal fuel efficiency.



# BEST-IN-CLASS 3,600-LB TOWING.<sup>26</sup>



Pacifica Pinnacle™ in Brilliant Black Crystal Pearl

## *WHEN BRINGING MORE IS THE BEST OPTION.*

Whether it's loading up the trailer with home-improvement supplies or pulling the family camper or boat, you'll easily get it done with an available Best-in-Class towing capacity of up to 1,633 kg (3,600 lb)<sup>26</sup> when properly equipped. When you're pulling that much weight, it's nice to know the available Trailer Sway Control (TSC) will help keep you safely on course.

## *STRUCTURAL INTEGRITY.*

The upper body and the frame of the Pacifica structure are designed as a single unit, helping to achieve premium driving agility. This exceptionally solid architecture carries advanced structural applications, optimized proportions and dynamic qualities like the use of high-strength steels. The door design also increases visibility around the front windows and pillars, while sound-absorbing barriers throughout the body and engine area help reduce overall cabin noise, contributing to less driver distraction.

Properly secure all cargo. Always tow within the vehicle's capacity.

# ALL-WHEEL DRIVE ... WITH CONVICTION.



Pacifica Pinnacle™ in Brilliant Black Crystal Pearl\*

## CONFIDENCE AND PRECISION.

The Pacifica offers the Most Advanced All-Wheel Drive (AWD) System in Its Class<sup>3</sup> with seamless engagement for an efficient drive. It's also the only vehicle to offer AWD along with the second- and third-row Stow 'n Go<sup>®</sup> seating and storage system<sup>5</sup> for enhanced performance with no sacrifice to versatility.

## NO MATTER WHAT THE FORECAST.

The fully automatic AWD performance system optimizes traction on sharp road inclines and declines, during inclement weather and under challenging road-surface conditions. If wheels lose traction on ice, snow or gravel, AWD automatically transfers power to the wheel(s) with more traction.

## ON-DEMAND FUEL EFFICIENCY.

By activating power and torque to the wheels as needed, the AWD system offers fuel-saving technology, giving you the ultimate in performance and traction when needed and optimal fuel efficiency when you don't.

## THE MOST CAPABLE AWD IN ITS CLASS.<sup>3</sup>

Pacifica's advanced AWD system is capable of applying brakes to low-traction wheels and transferring 100 percent of the available engine torque to the rear wheels, or whichever wheel(s) have more available traction.

\*AWD is available on gas-powered models only.

# CHRYSLER PACIFICA *S* APPEARANCE PACKAGE.

Sleek, sporty, and a little bit sinister ... the Chrysler Pacifica S Appearance Package enhances Pacifica with stylish, dark accents inside and out. From the embroidered seats to the Black grille, Pacifica "S" package features work together to make one serious statement.



Pacifica Touring-L with S Appearance Package in Brilliant Black



UNIQUE 18- OR AVAILABLE 20-INCH FORESHADOW ALUMINUM WHEELS



BLACK CHRYSLER GRILLE WING BADGE AND S BADGE WITH BLACK GRILLE SURROUND



LEATHER-WRAPPED STEERING WHEEL



SPORTY BLACK LEATHER-FACED SEATS WITH EMBROIDERED S LOGO



## TOURING

## TOURING-L

### POWERTRAIN

- 3.6L Pentastar™ Variable Valve Timing (VVT) V6 engine with Engine Stop/Start (ESS) technology
- 9-speed automatic transmission
- Front-Wheel Drive (FWD)

### STANDARD EQUIPMENT

#### INTERIOR AMENITIES

- 2nd-row in-floor storage bins
- 7-inch full-colour customizable in-cluster display centre
- Active Noise Cancellation
- Air conditioning with Tri-Zone Automatic Temperature Control (ATC)
- Dual power-sliding side doors
- Full-length floor console and floor tray
- Heated front seats and steering wheel
- Interior door-handle LED lamps
- Leather-wrapped heated steering wheel
- Liftgate flood lamp
- Media Centre:
  - 6 speakers
  - Android Auto™<sup>18</sup> compatibility
  - Apple CarPlay<sup>18</sup> support
  - Hands-free, wireless communication<sup>27</sup> with streaming audio
  - Media Hub with 2 USB ports and auxiliary audio input jack
  - SiriusXM with 1-year trial subscription<sup>7</sup>
  - Uconnect® 5 multimedia centre with 10.1-inch touchscreen
- Power 2nd-row windows
- Power door locks
- Power front windows with 1-touch up-and-down
- Power liftgate
- Rear reading/courtesy lamps
- Rearview day and night mirror
- Rotary E-shift dial
- Seating:
  - 2nd-row Stow 'n Go® fold-in-floor bucket seats with Easy Tilt
  - 3rd-row Stow 'n Go fold-in-floor 60/40 split-folding bench seat
  - Cloth bucket seats
  - Power driver's seat with Auto Advance 'n Return
- Soft-touch instrument panel with accent stitching
- Sunscreen glass
- Tilt and telescoping steering column
- Urethane steering wheel with audio and cruise controls

### EXTERIOR FEATURES

- 17-inch aluminum wheels with 235/65R17 BSW All-Season tires (FWD)
- Black grille
- Body-colour door handles
- Body-colour lower bodyside sill appliqué
- Body-colour, power, heated exterior mirrors with supplemental turn signals
- Bright daylight opening (DLO) surround moulding
- Chrysler wing grille badge and rear deck lid
- LED automatic headlamps
- LED fog lamps with Chrome accent bezels
- LED signature daytime running headlamps
- LED taillamps
- Pacifica badge

### SAFETY & SECURITY

- 4-wheel antilock disc brakes with Rain Brake Support and Ready Alert Braking
- 8 air bags;<sup>23</sup> including advanced multistage driver and front-passenger, driver and front-passenger inflatable knee blocker, supplemental front-seat-mounted side and supplemental side-curtain air bags for all rows
- Adaptive Cruise Control with Stop and Go<sup>20</sup>
- Auto High-Beam Headlamp Control
- Blind-Spot Monitoring with Rear Cross-Path Detection<sup>20</sup>
- Child Seat Anchor System (LATCH-ready)
- Electric Park Brake with SafeHold
- Electronic Stability Control (ESC)<sup>28</sup> with Hill Start Assist
- Full-Speed Forward Collision Warning with Active Braking<sup>20</sup>
- Keyless Enter 'n Go™ with proximity entry (all doors) and push-button start
- Lane Departure Warning with Lane Keep Assist<sup>20</sup>
- Park-Sense® Rear Park Assist with Stop<sup>20</sup>
- ParkView® Rear Back-Up Camera<sup>20</sup>
- Pedestrian Automatic Emergency Braking<sup>20</sup>
- Rain-sensing windshield wipers

### OPTIONAL EQUIPMENT

- Engine Block Heater
- S Appearance Package

### POWERTRAIN

- 3.6L Pentastar VVT V6 engine with ESS technology
- 9-speed automatic transmission
- All-Wheel Drive (AWD) — Available
- FWD

### ENHANCEMENTS vs. TOURING

#### INTERIOR AMENITIES

- 2nd-row USB charging port
- Leather-faced seating with perforated inserts
- Memory system for driver's seat
- Rear seatback grocery bag hooks

#### EXTERIOR FEATURES

- 17-inch aluminum wheels (FWD)
- 18-inch painted aluminum wheels (AWD)
- Bright door-handle inserts

#### OPTIONAL EQUIPMENT

- Dual-Pane Panoramic Sunroof
- Engine Block Heater
- Premium Package
- S Appearance Package
- Safety Sphere Group:
  - 360° Surround-View Camera<sup>22</sup>
  - Parallel and Perpendicular Park Assist<sup>20</sup>
  - Park-Sense Front and Rear Park Assist with Stop<sup>20</sup>
- Uconnect Theatre Family Group — Includes Rear-Seat Entertainment with Amazon Fire TV built-in<sup>4</sup>



## LIMITED

### POWERTRAIN

- 3.6L Pentastar™ Variable Valve Timing (VVT) V6 engine with Engine Stop/Start (ESS) technology
- 9-speed automatic transmission
- All-Wheel Drive (AWD) – Available
- Front-Wheel Drive (FWD)

### ENHANCEMENTS vs. TOURING-L

#### INTERIOR AMENITIES

- 2-tone luxury steering wheel with Chrome accent ring
- Auto-dimming rearview mirror
- Dual-pane panoramic sunroof
- Footwell courtesy lamps and illuminated map pockets
- Integrated Premium Console with illuminated front cup holders
- Memory system for exterior mirrors and radio presets
- Nappa leather-faced seating with perforated inserts and front ventilation
- Uconnect® 5 NAV<sup>6</sup> multimedia centre with 10.1-inch touchscreen
- Universal Garage Door Opener<sup>33</sup>
- Wireless charging pad

#### EXTERIOR FEATURES

- 18-inch painted aluminum wheels (FWD/AWD)
- Auto-adjust-in-Reverse exterior mirrors
- Bright bodyside moulding
- Chrome-capped power-folding exterior mirrors with supplemental turn signals and courtesy lamps
- Hands-free power liftgate
- Rear deck lid Limited badge

#### CAPABILITY & FUNCTIONALITY

- 220-amp alternator

#### OPTIONAL EQUIPMENT

- S Appearance Package
- Safety Sphere Group:
  - 360° Surround-View Camera<sup>22</sup>
  - Parallel and Perpendicular Park Assist<sup>20</sup>
  - Park-Sense® Front and Rear Park Assist with Stop<sup>20</sup>
- Uconnect Theatre Family Group – Includes Rear-Seat Entertainment with Amazon Fire TV built-in<sup>4</sup>



## PINNACLE™

### POWERTRAIN

- 3.6L Pentastar VVT V6 engine with ESS technology
- 9-speed automatic transmission
- AWD – Available
- FWD

### ENHANCEMENTS vs. LIMITED

#### INTERIOR AMENITIES

- 2nd-row captain's chairs
- 19 Harman Kardon® speakers with subwoofer and 760-watt amplifier
- Integrated Ultra Console
- Luxury front and rear floor mats
- Premium door-trim panel
- Premium quilted Caramel Nappa leather-faced seating with perforated inserts and 2-mode ventilation
- Suede headliner
- Uconnect Theatre Family Group – Includes Rear-Seat Entertainment with Amazon Fire TV built-in<sup>4</sup>

#### EXTERIOR FEATURES

- 20-inch polished aluminum wheels (FWD/AWD)
- Front side-door Platinum Chrome Pinnacle badge
- Platinum Chrome bodyside moulding
- Platinum Chrome daylight opening (DLO) surround moulding
- Platinum Chrome exterior mirrors and door-handle inserts
- Platinum Chrome Stow N Place® roof rack system
- Premium front and rear fascias with Platinum Chrome accents

#### SAFETY & SECURITY

- FamCAM™ interior camera<sup>21</sup>
- KeySense™ programmable key fob
- Safety Sphere Group:
  - 360° Surround-View Camera<sup>22</sup>
  - Parallel and Perpendicular Park Assist<sup>20</sup>
  - Park-Sense Front and Rear Park Assist with Stop<sup>20</sup>

ACTIVELY DRIVING CHANGE.



Pacifica Hybrid Pinnacle™ in Fathom Blue



*A SIMPLE CHOICE FOR GOING GREEN.*

From maximizing driving range to saving fuel while reducing emissions, the Pacifica Hybrid conserves resources without compromising versatility and space. Working seamlessly together, the gas and battery operations allow drivers to effortlessly gain efficiency with the choice of power as needed. The Hybrid powertrain offers an astounding 2.7 L<sub>e</sub>/100 km (105 MPG<sub>e</sub>) fuel efficiency rating in city driving,<sup>29</sup> enabling it to cover an average daily commute of up to 51 km (32 mi) of all-electric range and a total driving range of up to 835 km (519 mi)<sup>29</sup> with a full fuel tank and charge.

*EFFICIENT 3.6L PENTASTAR™ V6.*

When more power is needed, such as accelerating quickly to merge on the highway, the gas engine is automatically engaged. The powertrain includes a commanding 3.6L Pentastar Variable Valve Timing (VVT) V6 engine that delivers an impressive 260 horsepower. This specially adapted engine works with the electric motor, contributing to Best-in-Class fuel economy ratings of 2.7 L<sub>e</sub>/100 km (105 MPG<sub>e</sub>) city / 3.1 L<sub>e</sub>/100 km (91 MPG<sub>e</sub>) highway.<sup>30</sup>

*REGENERATIVE BRAKING.*

As part of the Hybrid powertrain, the regenerative braking system functions as a generator to redirect power to the battery, extending the electric range every time you apply the brakes. This brake-booster technology automatically shifts into regen mode to allow the engine's power to charge the Hybrid battery when the driver engages the brakes.

105 MPG<sub>e</sub><sup>30</sup>

# THE UPSIDES TO ITS UPSIDES.

## AUTOMATIC POWER EXCHANGE.

Alternating between electric and gas power is seamless, thanks to the Electrically Variable Transmission (EVT), featuring two electric motors — both capable of delivering power to the front wheels. With an electric driving range of up to 51 km (32 mi),<sup>29</sup> the Pacifica Hybrid is less dependent on gas, helping lower emissions for a greener environment while increasing savings at the pump and beyond.

## GOVERNMENT INCENTIVE PROGRAM.

When purchasing a Pacifica Hybrid, you may qualify for government incentive program rebates by province. Please visit [chrysler.ca](http://chrysler.ca) for more information.

- Gas-powered backup to Hybrid battery
- Internal combustion Atkinson Cycle on V6 engine
- System automatically activates which power is more efficient for the driving situation
- Regenerative braking helps recharge the battery and helps reduce wear to brake components
- Charge in as little as two hours with the available Mopar® Level 2 Charger<sup>31</sup>
- High-voltage, electrically charged 16-kWh lithium-ion battery
- Automatic system seamlessly transfers between battery and engine power
- The battery has a fully transferable 10-Year/160,000-Kilometre Limited Warranty

ACCESS HYBRID OWNERSHIP BENEFITS BY PROVINCE:  
LICENCE PLATE DESIGNATION AND AVAILABLE ROAD,  
FERRY AND TOLL PRIVILEGES

 upto 51 km  
WITHOUT ANY GAS



Pacifica Hybrid Pinnacle™ in Velvet Red Pearl



## YOUR HYBRID STATS: PRONTO.

*10.1-INCH TOUCHSCREEN.*  
The Hybrid Electric Pages found in the standard Uconnect® 5 system provides vehicle information for Power Flow, Driving History and Charging Schedule. The system includes the intuitive TomTom® Connected Navigation System<sup>6</sup> compatibility along with Dynamic Range Mapping, which can show you how far your charge will get you on your route.

PANDL



# EMPOWERING DETAILS.

DOWNLOAD THE CHRYSLER PACIFICA HYBRID MOBILE APP WITH UPDATED CHARGE STATUS AND CHARGING STATION LOCATOR.



From the Hybrid Electric Pages displayed on the Uconnect® touchscreen to the five-point illuminated charging indicator located on the upper dash, as well as the compatible smartphone app, Pacifica Hybrid features make keeping track of your charge status as simple as a glance.

## CHARGING SCHEDULE.

The Charging Schedule screen allows you to set when you want your vehicle to charge. To do so, press the box next to the setting "Enable Schedule" until a check mark appears in the box.



## POWER FLOW.

The Hybrid Electric Pages Power Flow screen displays the current power readings and the flow of power as it returns to the vehicle systems.

## DRIVING HISTORY.

The Driving History screen that is within the Hybrid Electric Pages shows the kilometres driven in both Full-Electric and Hybrid modes for current and previous weeks.



## FIVE-POINT CHARGE LEVEL INDICATOR.

The convenient charge level indicator, positioned on top of the dash, is visible at a glance and from outside the vehicle, so it's easy to identify the battery's charge level from a distance.

*BECOME FULLY PLUGGED-IN.*



Pacifica Hybrid Pinnacle™ in Granite Crystal Metallic



*EFFICIENCY COACH.*

The in-cluster display centre on the Pacifica Hybrid includes a coaching feature to help optimize fuel efficiency by showing a small green light to let you know when you're driving efficiently. When driving beyond the eco-friendly range, the light turns white so you can always be aware of your performance-to-efficiency operation.

*MAX REGEN FEATURE.*

The standard Hybrid Max Regen-On/-Off cluster message indicates increased energy efficiency while operating in low-gear range (L on shifter) as the electric battery charges during braking and certain driving dynamics — letting you know when you're optimizing Pacifica's Hybrid powertrain.

*THE POWER OF SAVINGS AND CHOICE.*

The Hybrid battery may be charged with a standard Level 1 (120-volt) home outlet or an available Mopar® Level 2 (240-volt) Charger, which can restore full power in as little as two hours.<sup>31</sup> The port is located above the driver's-side front fender for convenient access.





## TOURING-L

### POWERTRAIN

- 3.6L Pentastar™ Variable Valve Timing (VVT) V6 Hybrid engine with eFlite Electrically Variable Transmission (EVT)

### STANDARD EQUIPMENT

#### INTERIOR AMENITIES

- 7-inch full-colour customizable in-cluster display centre
- Active Noise Cancellation
- Air conditioning with Tri-Zone Automatic Temperature Control (ATC)
- Deluxe Insulation Group
- Dual power-sliding side doors
- Full-length floor console and floor tray
- Heated front seats and steering wheel
- Media Centre:
  - 6 speakers
  - Android Auto™<sup>18</sup> compatibility
  - Apple CarPlay<sup>18</sup> support
  - Hands-free, wireless communication<sup>27</sup> with streaming audio
  - Media Hub with 2 USB ports and auxiliary audio input jack
  - SiriusXM with 1-year trial subscription<sup>7</sup>
  - Uconnect® 5 multimedia centre with 10.1-inch touchscreen
- Power 2nd-row windows
- Power door locks
- Power front windows with 1-touch up-and-down
- Power liftgate
- Rearview day and night mirror
- Rotary E-shift dial
- Seating:
  - 3rd-row Stow 'n Go® fold-in-floor 60/40 split-folding bench seat
  - 7-passenger cloth seating with removable easy-entry sliding 2nd-row seats
  - Power 12-way driver's seat, including 4-way power lumbar adjust
- Soft-touch instrument panel with accent stitching

### EXTERIOR FEATURES

- 17-inch Diamond-Cut aluminum wheels with 235/65R17 BSW All-Season tires
- Black grille
- Black Stow N Place® roof rack system
- Body-colour door handles
- Body-colour lower bodyside sill appliqué
- Body-colour, power, heated exterior mirrors with supplemental turn signals
- Bright daylight opening (DLO) surround moulding
- Chrysler wing grille badge and rear deck lid
- eHybrid badge
- LED automatic headlamps
- LED fog lamps with Chrome accent bezels
- LED signature daytime running headlamps
- LED taillamps
- Pacifica badge

### SAFETY & SECURITY

- 4-wheel antilock disc brakes with Rain Brake Support and Ready Alert Braking
- 8 air bags,<sup>23</sup> including advanced multistage driver and front-passenger, driver and front-passenger inflatable knee blocker, supplemental front-seat-mounted side and supplemental side-curtain air bags for all rows
- Adaptive Cruise Control with Stop and Go<sup>20</sup>
- Auto High-Beam Headlamp Control
- Blind-Spot Monitoring with Rear Cross-Path Detection<sup>20</sup>
- Child Seat Anchor System (LATCH-ready)
- Electric Park Brake with SafeHold
- Electronic Stability Control (ESC)<sup>28</sup> with Hill Start Assist
- Full-Speed Forward Collision Warning with Active Braking<sup>20</sup>
- Keyless Enter 'n Go™ with proximity entry (all doors) and push-button start
- Lane Departure Warning with Lane Keep Assist<sup>20</sup>
- ParkView® Rear Back-Up Camera<sup>20</sup>
- Pedestrian Automatic Emergency Braking<sup>20</sup>

- Pedestrian Warning Speaker<sup>20</sup>
- Rain-sensing windshield wipers
- Remote start
- Security alarm<sup>32</sup>
- Sentry Key® antitheft engine immobilizer
- Tire Pressure Monitoring Display

### CAPABILITY & FUNCTIONALITY

- 5-point instrument-panel charging indicator
- 6.6-kW onboard charger
- 16-kWh lithium-ion battery
- 650-amp maintenance-free battery
- Adaptive Cruise Control with Stop and Go<sup>20</sup>
- Capless fuel-filler door
- Electric power steering
- Heavy-duty suspension

### OPTIONAL EQUIPMENT

- S Appearance Package
- Safety Sphere Group:
  - 360° Surround-View Camera<sup>22</sup>
  - Parallel and Perpendicular Park Assist<sup>20</sup>
  - Park-Sense® Front and Rear Park Assist with Stop<sup>20</sup>
- Uconnect Theatre Family Group — Includes Rear-Seat Entertainment with Amazon Fire TV built-in<sup>4</sup>



## LIMITED

### POWERTRAIN

- 3.6L Pentastar™ Variable Valve Timing (VVT) V6 Hybrid engine with eFlite Electrically Variable Transmission (EVT)

### ENHANCEMENTS vs. TOURING-L

#### INTERIOR AMENITIES

- 2-tone luxury steering wheel with Chrome accent ring
- Dual-pane panoramic sunroof
- Footwell courtesy lamps and illuminated map pockets
- Integrated Premium Console with illuminated front cup holders
- Memory system for exterior mirrors and radio presets
- Nappa leather-faced seating with perforated inserts and front ventilation
- Uconnect® 5 NAV<sup>6</sup> multimedia centre with 10.1-inch touchscreen
- Universal Garage Door Opener<sup>33</sup>
- Wireless charging pad

#### EXTERIOR FEATURES

- Auto-adjust-in-Reverse exterior mirrors
- Auto-dimming exterior driver's and front-passenger mirrors
- Bright bodyside moulding
- Chrome-capped power-folding exterior mirrors with supplemental turn signals and courtesy lamps
- Hands-free power liftgate

#### OPTIONAL EQUIPMENT

- S Appearance Package
- Safety Sphere Group:
  - 360° Surround-View Camera<sup>22</sup>
  - Parallel and Perpendicular Park Assist<sup>20</sup>
  - Park-Sense® Front and Rear Park Assist with Stop<sup>20</sup>
- Uconnect Theatre Family Group — Includes Rear-Seat Entertainment with Amazon Fire TV built-in<sup>4</sup>



## PINNACLE™

### POWERTRAIN

- 3.6L Pentastar VVT V6 Hybrid engine with eFlite EVT

### ENHANCEMENTS vs. LIMITED

#### INTERIOR AMENITIES

- 20 Harman Kardon® speakers with subwoofer and 760-watt amplifier
- Auto-dimming rearview mirror
- Integrated Ultra Console
- Luxury front and rear floor mats
- Premium door-trim panel
- Premium quilted Caramel Nappa leather-faced seating with perforated inserts and 2-mode ventilation
- Suede headliner
- Uconnect Theatre Family Group — Includes Rear-Seat Entertainment with Amazon Fire TV built-in<sup>4</sup>

#### EXTERIOR FEATURES

- 18-inch polished aluminum wheels
- Front side-door Platinum Chrome Pinnacle badge
- Platinum Chrome bodyside moulding
- Platinum Chrome daylight opening (DLO) surround moulding
- Platinum Chrome exterior mirrors and door-handle inserts
- Platinum Chrome Stow N Place® roof rack system
- Premium front and rear fascias with Platinum Chrome accents

#### SAFETY & SECURITY

- FamCAM™ interior camera<sup>21</sup>
- KeySense™ programmable key fob
- Safety Sphere Group:
  - 360° Surround-View Camera<sup>22</sup>
  - Parallel and Perpendicular Park Assist<sup>20</sup>
  - Park-Sense Front and Rear Park Assist with Stop<sup>20</sup>

EXTERIOR COLOURS

INTERIOR COLOURS

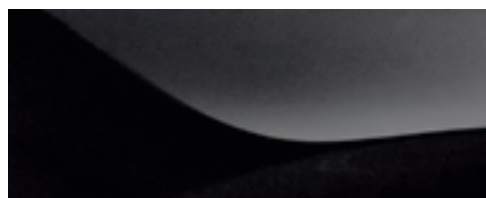
WHEELS



Velvet Red Pearl



Fathom Blue



Brilliant Black Crystal Pearl



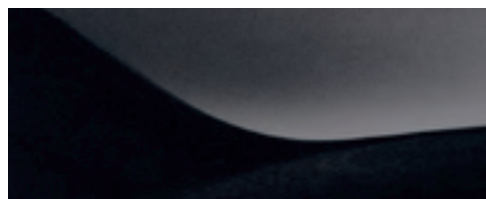
Ceramic Grey



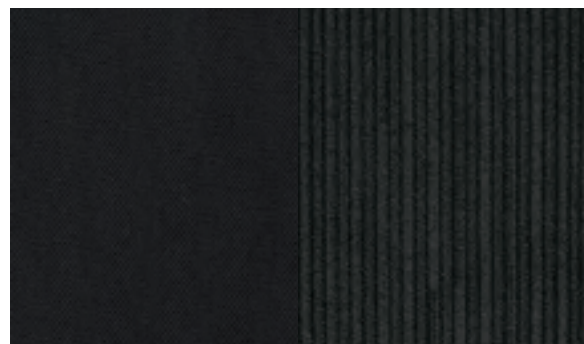
Bright White



Silver Mist



Granite Crystal Metallic



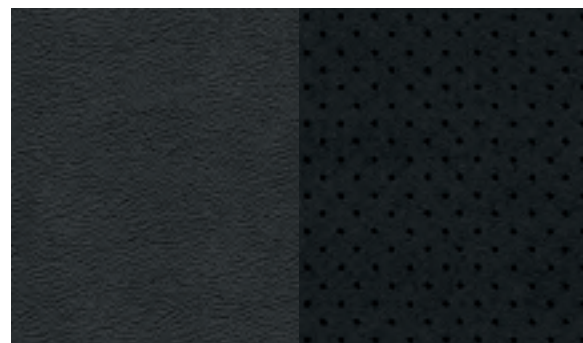
Cloth — Black with Light Diesel Grey accent stitching and embroidered S logo  
Standard on Touring



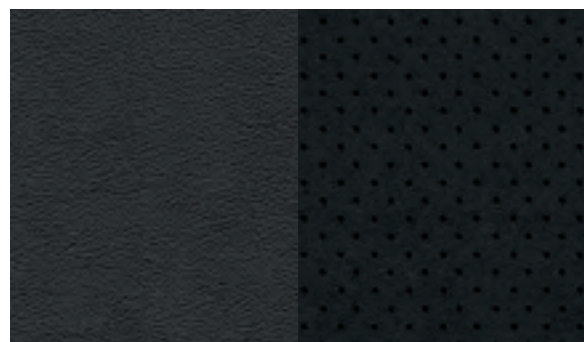
Caprice leatherette — Black  
Standard on Touring-L (AWD/RWD) and Touring-L Hybrid



Caprice leatherette — Black with embroidered S logo  
Available on Touring-L and Touring-L Hybrid



Nappa leather-faced with perforated inserts — Black with Light Diesel Grey accent piping and stitching  
Standard on Limited and Limited Hybrid



Nappa leather-faced with perforated inserts — Black with Light Diesel Grey accent piping and stitching and embroidered S logo  
Available on Limited and Limited Hybrid with S Appearance Package



Premium quilted Nappa leather-faced with perforated inserts — Caramel with Light Diesel Grey accent piping and stitching  
Standard on Pinnacle™



17-inch Diamond-Cut aluminum with Grey pockets  
Standard on Touring and Touring-L FWD



18-inch painted aluminum  
Standard on Touring-L AWD



18-inch Foreshadow aluminum  
Standard on Touring (FWD) and Touring-L (FWD/AWD) with S Appearance Package



18-inch painted aluminum  
Standard on Limited (FWD/AWD)



20-inch Foreshadow aluminum  
Optional on Touring-L and Limited (FWD/AWD) with S Appearance Package



20-inch polished aluminum with Grey pockets  
Standard on Pinnacle (FWD/AWD) with S Appearance Package



17-inch Diamond-Cut aluminum with Grey pockets  
Standard on Touring-L Hybrid and Limited Hybrid



18-inch Foreshadow aluminum  
Available on Touring-L Hybrid and Limited Hybrid with S Appearance Package



18-inch polished aluminum with Grey pockets  
Standard on Pinnacle Hybrid

# CHRYSLER GRAND CARAVAN.



## THE HOUSEHOLD CONCIERGE.

### THERE TO SMOOTH OUT THE DAY.

To keep things rolling, families benefit from a reliable resource. Chrysler invented the minivan and continues to innovate with the Chrysler Grand Caravan. This home away from home gives access to space, efficiency, connectivity and sophisticated design — to help families thrive through every day with the help of over 100 standard and available safety and security features.

Properly secure all cargo.

Grand Caravan SXT in Velvet Red Pearl





*IT THINKS OF EVERYTHING.*

Grand Caravan SXT in Velvet Red Pearl

**READY. SET. GO.**

Count on Chrysler Grand Caravan to make you look good in every way. Genius touches smooth out the day's transitions. This highly adaptable family vehicle carries seating for seven with expansive storage and Stow 'n Go® seating. The sleek, sporty and functional exterior includes dual power-sliding side doors and 17-inch wheels. As Canada's Best-Selling Engine,<sup>24</sup> the standard 3.6L Pentastar™ Variable Valve Timing (VVT) V6 engine offers an optimal combination of power and efficiency.

**SMART TECHNOLOGY.**

With the available SafetyTec™ Group, including Pedestrian Automatic Emergency Braking (PAEB)<sup>20</sup> and Full-Speed Forward Collision Warning with Active Braking<sup>20</sup> features, Grand Caravan applies smart technology to an abundance of passive and active standard and available safety and security features. Drivers will embrace the compatible functionality of the new 7-inch Uconnect® 5 touchscreen multimedia centre. This integrated digital hub for media and communication enables wireless Apple CarPlay<sup>18</sup> support and Android Auto™<sup>18</sup> compatibility to access playlists, maps and more.

Properly secure all cargo.



STANDARD SEATING FOR SEVEN



ACCOMMODATING MULTIMEDIA CENTRE

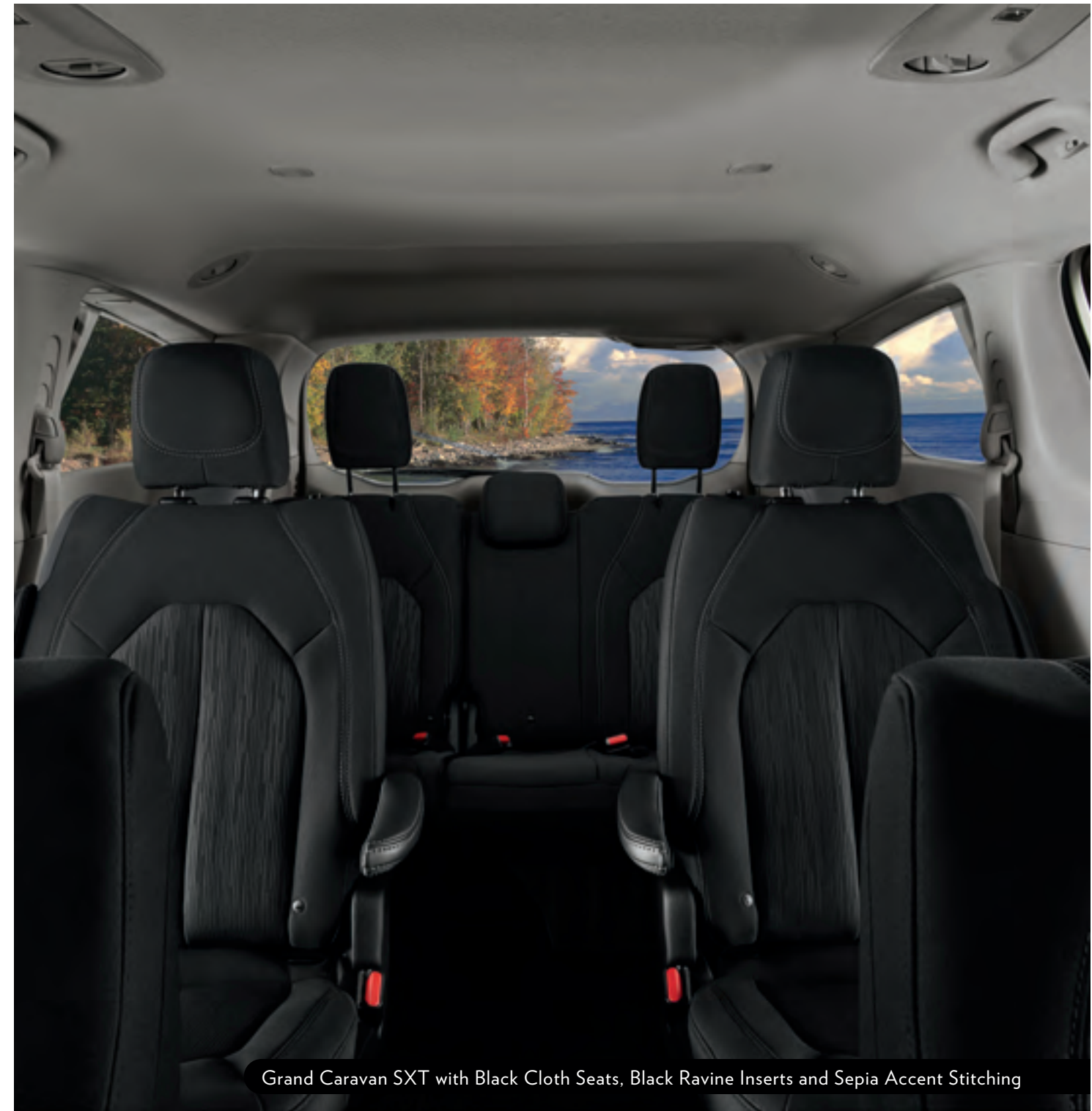


7-INCH TOUCHSCREEN



## *QUICK CHANGE ARTIST.*

Virtually limitless storage setups can be configured with the expansive seating and storage space. When third-row seats are stowed in the floor and second-row seats are removed or stowed with the standard second-row Stow 'n Go® seating, an expansive flat cargo space can fit a stack of 4 x 8-foot construction sheets.



Grand Caravan SXT with Black Cloth Seats, Black Ravine Inserts and Sepia Accent Stitching

The mobile family room offers in-floor storage bins as well as four LATCH-installed child seats. The intuitive interior includes the standard Rotary E-shift dial in the centre stack and available open centre console with storage. The standard 12-way-adjustable driver's seat with four-way power lumbar support and memory settings, and standard heated steering wheel, make Grand Caravan built for driver comfort as well as convenience.





**CLASS-EXCLUSIVE STOW 'N GO® SEATING AND STORAGE.<sup>1</sup>**

*EVERYTHING IN ITS PLACE.*

The Chrysler Grand Caravan brings the innovative convenience that the Chrysler minivan lineup is known for, with second- and third-row Stow 'n Go fold-in-floor seating and storage. Simply fold the seats into the floor to make plenty of space for all your cargo. Use the easy-to-access in-floor bins to get even more capacity to store your gear and valuables for safekeeping.

Properly secure all cargo.



READY-TO-ROLL STORAGE



THIRD-ROW STOW 'N GO



STANDARD SECOND-ROW IN-FLOOR STORAGE BINS



STANDARD SECOND-ROW STOW 'N GO SEATING



## INFINITELY APPROACHABLE.

Grand Caravan SXT in Brilliant Black Crystal Pearl

### DUAL POWER-SLIDING SIDE DOORS AND LIFTGATE.

Getting passengers along with their belongings in and out quickly and smoothly is made simple with the touch of a button from the driver's seat to open and close the sliding side doors and liftgate.

Properly secure all cargo.

### KEYLESS ENTER 'N GO.™

This standard passive entry system allows you to open doors as well as start the vehicle with a keyless, push-button ignition via a personalized fob. With the fob on or near you, simply pull the door handle or rear liftgate latch to unlock the vehicle.



## SET THE TONE AND TENOR.

### *PREMIUM ACOUSTICS.*

The standard built-in Active Noise Cancellation (ANC) technology subdues unwanted noise to enhance cabin quietness. It also allows for premium sound quality to be delivered through the standard six-speaker audio system.

### *KEYSENSE.™*

Ideal for families with new drivers, the available KeySense fob promotes safe driving habits and limits distractions. Easily programmed through the Uconnect® touchscreen, KeySense can limit driving speed and audio volume, block select SiriusXM<sup>7</sup> channels, mute the audio when front seat belts are unfastened and prevent disabling of available active safety systems.



#### 7-INCH IN-CLUSTER DISPLAY CENTRE.

This premium display delivers crisp, configurable graphics integrated between the cluster gauges. A customizable screen allows for a range of driver-assist settings, such as digital speedometer, fuel economy, alerts for available features like Full-Speed Forward Collision Warning with Active Braking<sup>20</sup> and turn-by-turn directions if equipped with navigation.<sup>6</sup>

## WELL-CONNECTED.



*UCONNECT® IS YOUR COMMUNICATION CENTRE.*

Remain focused on the road as you communicate, and stay entertained with the standard 7-inch Uconnect multimedia centre touchscreen, including a SiriusXM one-year trial subscription.<sup>7</sup> With your compatible phone paired to the Uconnect 5 system's hands-free technology, the Grand Caravan features wireless integrated voice command,<sup>27</sup> voice text reply,<sup>34</sup> Apple CarPlay<sup>18</sup> and Android Auto,<sup>TM18</sup> allowing you to access playlists, maps and more.

*THE 10.1-INCH UCONNECT 5 TOUCHSCREEN SYSTEM.*

The ultimate in convenience comes from technology that makes every day easier. The available 10.1-inch Uconnect 5 touchscreen system brings connected services that make it easy to search and navigate. This system adds available 4G LTE Wi-Fi Hotspot,<sup>10</sup> TomTom® Connected Navigation System<sup>6</sup> and Connected Travel and Traffic services, as well as SiriusXM Guardian<sup>14</sup> and SiriusXM with 360L<sup>7</sup> with one-year trial subscriptions. With blazing processing speeds, the system has the ability to wirelessly connect two compatible phones simultaneously. Additionally, up to six user profiles can be personalized on the home screen for comfort, convenience and entertainment preferences.



SiriusXM with 360L<sup>7</sup> delivers satellite and on-demand streaming. This groundbreaking, next-generation platform gives you over 200 channels and 5,000+ hours of on-demand streaming programs on your in-vehicle satellite radio, including commercial-free music, plus sports, news, talk and entertainment. You'll get personalized listening recommendations, listener profiles and much more, like customized Pandora® music stations, recorded shows, interviews and events from an exclusive on-demand library. You can also listen wherever you go on your portable devices with the SiriusXM<sup>7</sup> App included with your one-year trial. Available.



Display your favourite iPhone apps right on your Uconnect touchscreen. Access your iTunes library, call anyone in your contacts list or just ask Siri<sup>17</sup> to help you out while you drive. Get directions, make calls and send messages, and connect to Apple Music, all without pausing your drive.<sup>18</sup> Standard.



Connect your Android<sup>TM</sup> phone to bring the best of Google with you in your Uconnect system. Talk to Google on Android Auto<sup>18</sup> and send messages, get directions, control media and more with your voice so you can keep your focus on driving. Just say, "Hey Google" or long-press the voice-control button on your steering wheel. Standard.



## CANADA'S BEST-SELLING ENGINE: 3.6L PENTASTAR™ V6.<sup>24</sup>

Grand Caravan SXT in Velvet Red Pearl

### *3.6L PENTASTAR VARIABLE VALVE TIMING (VVT) V6 ENGINE.*

The 3.6L Pentastar V6 is both commanding and economical. This proven powerhouse delivers an impressive 287 horsepower and 262 lb-ft of torque. Efficiency can be further enhanced by standard Engine Stop/Start (ESS) technology that automatically shuts off the engine as the vehicle brakes to a stop, then restarts when the brake pedal is released.

### *THE EASE OF A 9-SPEED TRANSMISSION.*

The Grand Caravan is equipped with a standard 9-speed automatic transmission — a primary contributor to a Best-in-Class gas highway fuel economy rating of 8.4 L/100 km (34 mpg)<sup>25</sup> Its unique calibration allows for outstanding vehicle launch characteristics, with quick, smooth transitions between gears. The transmission also enables lower engine rpm while cruising at highway speeds for optimal fuel efficiency.



## SXT

### POWERTRAIN

- 3.6L Pentastar™ Variable Valve Timing (VVT) V6 engine with Engine Stop/Start (ESS) technology and 9-speed automatic transmission

### STANDARD EQUIPMENT

#### INTERIOR AMENITIES

- 2 12-volt auxiliary power outlets
- 3.5-inch Electronic Vehicle Information Centre (EVIC)
- Active Noise Cancellation (ANC)
- Air conditioning with Tri-Zone Manual Temperature Control
- Cargo compartment lamp
- Front and rear floor mats
- Front seatback map pockets
- Heated, leather-wrapped steering wheel with mounted audio controls and cruise controls
- Interior observation mirror
- Media Centre:
  - Android Auto™<sup>18</sup> compatibility
  - Apple CarPlay<sup>18</sup> support
  - Hands-free, wireless communication<sup>27</sup> with streaming audio
  - Media Hub with USB port and auxiliary audio input jack
  - Uconnect® 5 multimedia centre with 7-inch touchscreen and 6 speakers
- Overhead ambient surround lighting with LED courtesy lamps
- Power 12-way driver's seat, including 4-way power lumbar adjust
- Power door locks
- Power front- and 2nd-row windows with front 1-touch up-and-down
- Remote start
- Rotary E-shift dial
- Seating:
  - 2nd-row Stow 'n Go® fold-in-floor seats with in-floor storage and Easy Tilt
  - 3rd-row Stow 'n Go fold-in-floor 60/40 split-folding bench seat
  - Cloth bucket seats
  - Heated front seats

- Security alarm<sup>32</sup>
- SiriusXM with 1-year trial subscription<sup>7</sup>
- Storage:
  - Floor tray and console
  - Lower instrument-panel cubby bin
- Sun visors with illuminated vanity mirrors
- Sunscreen glass
- Tilt and telescoping steering column

#### EXTERIOR FEATURES

- 17-inch Tech Silver aluminum wheels and 235/65R17 BSW All-Season tires
- Active grille shutters
- Automatic headlamps
- Black grille with Bright surround
- Body-colour door handles
- Body-colour lower bodyside sill appliqué
- Body-colour shark fin antenna
- Bright daylight opening (DLO) surround moulding
- Chrysler wing grille badge and rear deck lid Grand Caravan badge
- Dual power-sliding side doors
- Halogen headlamps with time-off delay
- Incandescent taillamps
- Power, heated, manual-folding mirrors with body-colour caps
- Power liftgate

### SAFETY & SECURITY

- 4-wheel antilock disc brakes with Rain Brake Support and Ready Alert Braking
- 8 air bags;<sup>23</sup> including advanced multistage, driver and front-passenger, driver and front-passenger inflatable knee blocker, supplemental front-seat-mounted side and supplemental side-curtain air bags for all rows
- Child Seat Anchor System (LATCH-ready)
- Electric Park Brake with SafeHold
- Electronic Stability Control (ESC)<sup>28</sup> with Hill Start Assist
- ParkView® Rear Back-Up Camera<sup>20</sup>
- Proximity entry (driver's door) and push-button start
- Sentry Key® anti-theft engine immobilizer
- Tire Pressure Monitoring Display

### CAPABILITY & FUNCTIONALITY

- 180-amp alternator
- 650-amp maintenance-free battery
- Capless fuel-filler door
- Cruise control
- Electric power steering
- Touring suspension

### OPTIONAL EQUIPMENT

- SafetyTec™ Group:
  - 17-inch Power Inflatable Spare Tire
  - Advanced Brake Assist
  - Blind-Spot Monitoring with Rear Cross-Path Detection<sup>20</sup>
  - Body-Colour Power Mirrors
  - Park-Sense® Rear Park Assist with Stop<sup>20</sup>
  - Portable Air Compressor
- Uconnect 5 NAV<sup>6</sup> Multimedia Centre with 10.1-inch Touchscreen (available with SafetyTec Group)

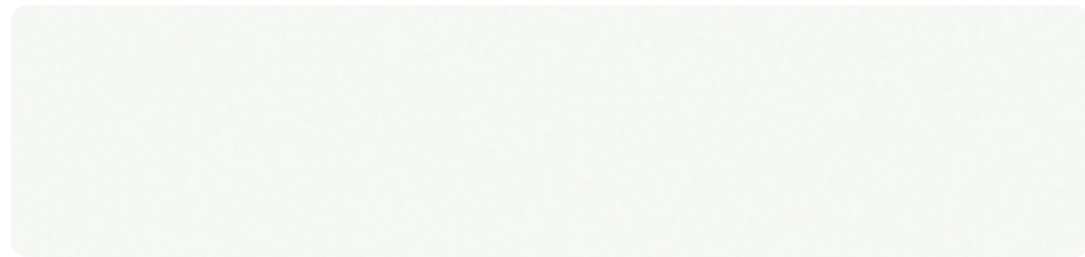
EXTERIOR COLOURS



Granite Crystal Metallic



Silver Mist



Bright White

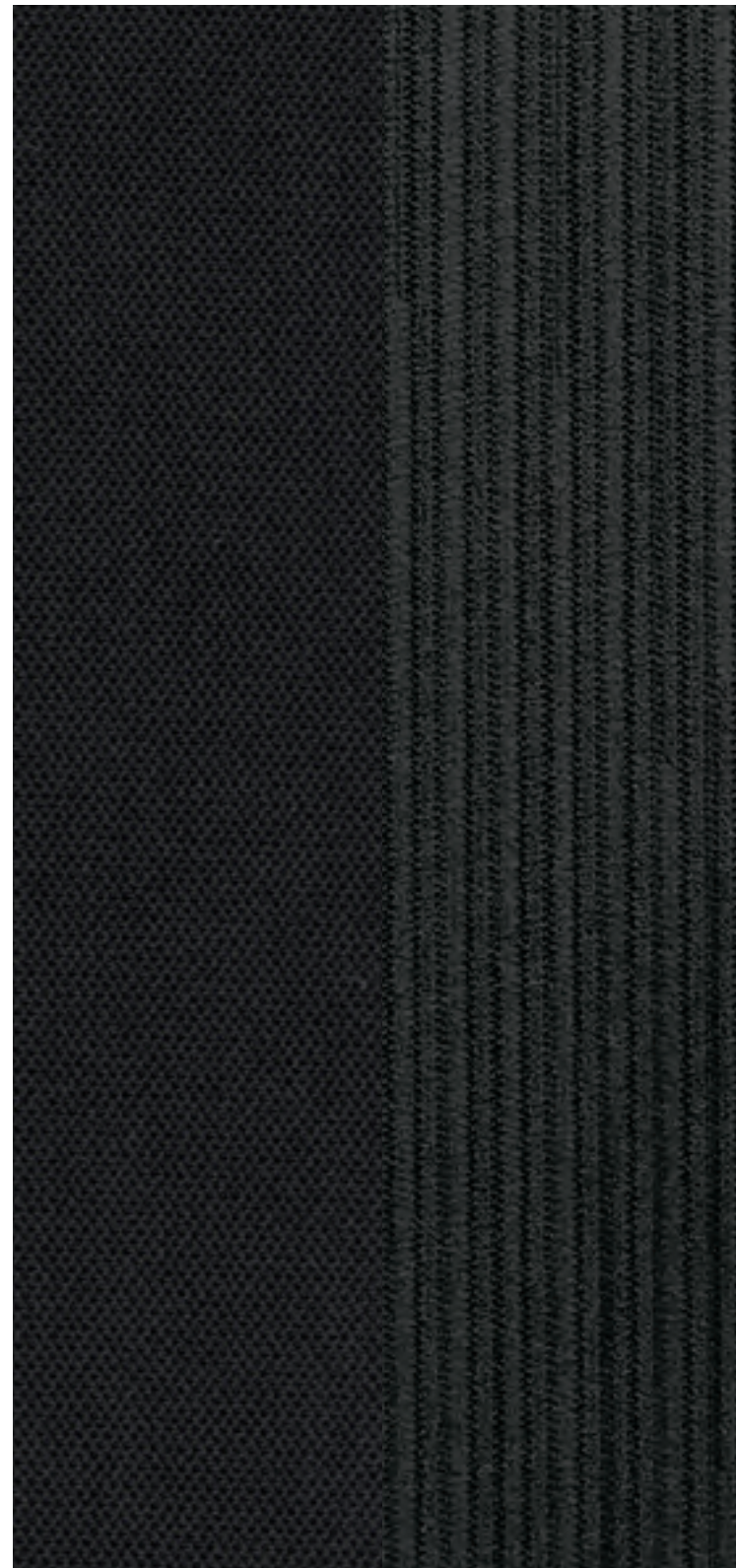


Brilliant Black Crystal Pearl



Velvet Red Pearl

INTERIOR COLOUR



WHEEL



17-inch Tech Silver aluminum  
Standard on Grand Caravan SXT

Cloth — Black with Black Ravine inserts  
and Sepia accent stitching  
Standard on Grand Caravan SXT

WARRANTIES: 2023 Chrysler, Jeep, Dodge and Ram vehicles are backed by a 5-year or 100,000-kilometre fully transferable Powertrain Limited Warranty\* with \$0 deductible plus 24-hour roadside assistance.† SRT vehicles are backed by a 3-year or 60,000-kilometre fully transferable Powertrain Limited Warranty\* with \$0 deductible plus 24-hour roadside assistance. Basic Warranty coverage is for 3 years or 60,000 kilometres.\* Rust-through coverage on all body sheet metal is for 3 years. The Cummins Turbo Diesel engine is protected by a separate Limited Warranty covering the engine for 5 years or 160,000 kilometres.\* The EcoDiesel engine is backed by a 5-year or 100,000-kilometre fully transferable Powertrain Limited Warranty\* with \$0 deductible plus 24-hour roadside assistance.†

\*Whichever comes first. Some conditions may apply. †The 5-year/100,000-Kilometre Powertrain Limited Warranty does not apply to vehicles sold for certain commercial uses. See your retailer for full details.

AUTHENTIC CHRYSLER ACCESSORIES BY MOPAR are designed specifically for your Chrysler vehicle for exceptional fit, finish and performance. Visit your retailer or [mopar.ca](http://mopar.ca)

MOPAR VEHICLE PROTECTION: FCA Canada Inc. has a vested interest in your satisfaction and owner experience with your new vehicle. Mopar Vehicle Protection offers extended service and maintenance plans to help ensure you'll enjoy your vehicle for many years down the road — for just pennies a day. For more information on comprehensive vehicle coverage, see your local Chrysler, Jeep, Dodge and Ram retailer or call 1-800-465-2001.

ABOUT THIS CATALOGUE: Since the time of printing, some of the information you'll find in this catalogue may have been updated. Ask your retailer for details. Some of the equipment shown or described throughout this catalogue is available at extra cost. Specifications, descriptions, illustrative materials and all competitive comparisons contained herein are as accurate as known at the time this publication was approved for printing. FCA Canada Inc. reserves the right to make changes at any time without notice and without incurring obligation. For the price of the model with the equipment you desire, or verification of specifications contained herein, see your Chrysler, Jeep, Dodge and Ram retailer. ©2022 FCA Canada Inc. All Rights Reserved. Chrysler, Dodge, Grand Caravan, Jeep, Ram, Mopar, SRT, Pacifica, the Chrysler wing design, Mopar Vehicle Protection, Park-Sense, ParkView, Sentry Key, Stow 'n Go, Stow N Place, Stow 'n Vac, SXT and Uconnect are registered trademarks and FamCAM, Keyless Enter 'n Go, KeySense, Pentastar, Pinnacle, SafetyTec and Send & Go are trademarks of FCA US LLC. Amazon, Fire TV, Prime Video, Alexa and all related marks are trademarks of Amazon.com, Inc. or its affiliates. Content availability may vary by region. Audible is a registered trademark of Audible, Inc. Cummins is a registered trademark of Cummins, Inc. Facebook and logo are registered trademarks of Meta Platforms, Inc. Google, Android, YouTube, Android Auto, and other related marks and logos are trademarks of Google LLC. Harman Kardon is a registered trademark of Harman International Industries, Incorporated. iPhone, iTunes and Siri are registered trademarks and Apple CarPlay is a trademark of Apple Inc. Instagram is a registered trademark of Instagram, Inc. Pandora and the Music Genome Project are registered trademarks of Pandora Media, LLC. ©2022 SiriusXM Canada Inc. "SiriusXM," SiriusXM Guardian, the SiriusXM logo, channel names and logos are trademarks of SiriusXM Radio Inc. and are used under licence. TomTom is a registered trademark of TomTom International BV. The Twitter name, logo, Twitter T, Tweet and Twitter bird are service marks of Twitter, Inc. All other trademarks, images and logos are the property of their respective owners and are displayed in this publication with permission. All rights reserved.

DISCLAIMERS: 1. Based on standard and available features and the FCA US LLC Premium Minivan segment. 2. Based on the latest available competitive information for minivans in the *WardsAuto* Small Van segment. Most luxurious claim based on Chrysler Pacifica Pinnacle model — excludes other vehicles designed and manufactured by FCA US LLC. 3. Based on the latest available competitive information for minivans in the *WardsAuto* Small Van segment — excludes other vehicles designed and manufactured by FCA US LLC. 4. Vehicle must be in an active and usable cellular range and properly equipped with a Uconnect 5 or Uconnect 5 NAV system and Uconnect Theatre Family Group, including Rear-Seat Entertainment with Amazon Fire TV built-in. Requires a mobile device with Wi-Fi Hotspot service and a linked Amazon account. Wi-Fi data plan and streaming service subscriptions are not included; data charges and overages may apply. 5. Based on the latest available competitive information for minivans in the *WardsAuto* Small Van segment. Second-row Stow 'n Go not available on Hybrid or Pinnacle models — excludes other vehicles designed and manufactured by FCA US LLC. 6. Never program while driving. GPS mapping and available 3D navigation may not be detailed or available in all areas or reflect current road regulations. 7. If you decide to continue service after your trial, the subscription plan you choose will continue and you will be charged according to your chosen payment method at then-current rates unless you cancel your services. Fees and taxes apply. Some services and features are subject to device capabilities and location availability. Please see the SiriusXM Customer Agreement at [www.siriusxm.ca/terms](http://www.siriusxm.ca/terms) for complete terms and how to cancel, which includes calling SiriusXM at 1-888-539-7474. All fees and programming are subject to change, provided that we will notify you in advance of any price change. We use personal information in accordance with our Privacy Policy, available at [www.siriusxm.ca/privacy](http://www.siriusxm.ca/privacy). 8. Vehicle must be properly equipped with a Uconnect 5 NAV system. Requires a Wi-Fi Hotspot data plan and linked Amazon account to run Alexa in the vehicle. 9. Compatible with properly equipped Uconnect systems on eligible vehicles. Requires registration of vehicle to SiriusXM Guardian connected services and fulfillment of minimum subscription requirements. 10. Three-month/1GB trial included with the purchase or lease of a new vehicle. Upon expiration of the trial period, purchase of a subscription is required. Wi-Fi Hotspot available through third-party subscription. Requires Internet-enabled mobile device. See retailer for details. This feature is not intended for use by the driver while the vehicle is in motion. Always drive carefully. 11. Roadside Assistance Call connects you with an agent who will provide Roadside Assistance Service. Vehicle must be within the United States, Puerto Rico or Canada and have network coverage. Additional roadside assistance charges may apply. Check warranty for details. 12. In the event of a medical or other emergency, press the SOS button to be connected to a Customer Care agent who can direct emergency assistance to your vehicle's GPS location. 13. Remote Vehicle Start not available on all vehicles. You are responsible for using remote features in accordance with any laws, rules or ordinances in effect in your vehicle's location. 14. All SiriusXM Guardian equipped vehicles come with a 12-month complimentary trial effective on the date of purchase or lease of a new vehicle. Enrolment in the trial is required to receive service. Upon expiration of the trial period, purchase of a subscription is required to continue SiriusXM Guardian. SiriusXM Guardian is available only on equipped vehicles purchased within the United States, Puerto Rico and Canada. Services can only be used where cellular coverage is available. See Uconnect and SiriusXM Guardian Terms of Service for complete service limitations. You are responsible for using remote features in accordance with any laws, rules or ordinances in effect in your vehicle's location. 15. Stolen vehicle police report required. 16. Send & Go requires a vehicle equipped with Navigation. To use Send & Go, you must have the Uconnect App with SiriusXM Guardian installed on a compatible smartphone and have an active subscription to SiriusXM Guardian. 17. Requires an iPhone with Siri. Certain features are not available while the vehicle is in motion. iPhone must be within active cellular range. Customer's existing iPhone data rates apply to Internet-supported features. 18. Driving while distracted can result in loss of vehicle control. Only use mobile phones and other devices, even with voice controls, when it is safe to do so. Requires compatible iPhone. See retailer for phone compatibility. Data plan rates apply. To use Android Auto on your phone screen, you'll need an Android phone running 6.0 or higher and the Android Auto App. 19. Remote Vehicle Start not available on all vehicles. You are responsible for using remote features in accordance with any laws, rules or ordinances in effect in your vehicle's location. You must have an active subscription to SiriusXM Guardian in order to use remote services. See Terms of Service for service limitations. 20. This is a driver convenience system, not a substitute for active driver involvement. The driver must remain aware of his or her surroundings and be prepared to take corrective action to avoid collisions. 21. Driving while distracted can result in loss of vehicle control. Only use the FamCAM interior camera when it is safe to do so. 22. Always check entire surroundings visually before proceeding. 23. Always sit properly in designated seating positions with seat belts securely fastened at all times. 24. Based on IHS Markit Automotive Canadian New Vehicle Total Registrations for combined years CY2016 to CYTD September 2021. 25. Based on *EnerGuide* highway fuel consumption ratings and fuel tank options. Government of Canada test methods used. Your actual fuel consumption will vary based on driving habits and other factors. Ask your retailer for the *EnerGuide* information. 8.4 L/100 km (34 mpg) highway and 12.4 L/100 km (23 mpg) city on Chrysler Pacifica non-Hybrid models equipped with the 3.6L Pentastar VVT V6 engine and 9-speed automatic transmission. Miles per gallon (MPG) ratings based on imperial gallon. 26. Based on the latest available competitive information for minivans in the *WardsAuto* Small Van segment. Excludes Hybrid models and other vehicles designed and manufactured by FCA US LLC. When properly equipped. 27. Driving while distracted can result in loss of vehicle control. Only use mobile phones and other devices, even with voice commands, when it is safe to do so. Voice commands of phone require a compatible phone. 28. No system can repeal the laws of physics or overcome careless driving actions. Performance is limited by available traction, which snow, ice and other conditions can affect. When the warning lamp flashes, the driver needs to use less throttle and adapt speed and driving behaviour to prevailing road conditions. 29. Electric range based on *EnerGuide* combined fuel consumption ratings, full battery charge and Hybrid mode. Driving range based on *EnerGuide* combined fuel consumption ratings, fuel tank capacity, full battery charge and Hybrid mode. Your actual driving range will vary based on driving habits and other factors. 30. Based on *EnerGuide* fuel consumption ratings for minivans in the *WardsAuto* Small Van segment. 3.1 L<sub>e</sub>/100 km (91 MPG<sub>e</sub>) highway. 2022 Chrysler Pacifica Hybrid with 3.6L Pentastar VVT V6 Hybrid engine and eFlite Electrically Variable Transmission. L<sub>e</sub>/100 km is an equivalent measure of gasoline fuel consumption for electric energy consumed by Plug-in Hybrid Electric Vehicles (PHEV) operating in electric mode. Miles per gallon equivalent (MPG<sub>e</sub>) ratings based on imperial gallon. Government of Canada test methods used. Your actual fuel consumption will vary based on driving habits and other factors. 31. Requires purchase and professional installation. See Chrysler retailer for details. 32. Vehicle must be locked and system activated for alarm to sound. 33. Not compatible with all garage door openers. 34. Preset voice-to-text messaging and incoming text message reading require a MAP-enabled phone.



## PACIFICA PACIFICA HYBRID GRAND CARAVAN



[www.instagram.com/  
chryslerca\\_](http://www.instagram.com/chryslerca_)



Like us on:  
[facebook.com/  
chryslercanada](https://facebook.com/chryslercanada)



Follow us on:  
[twitter.com/  
chryslercanada](https://twitter.com/chryslercanada)



Sign up for  
updates at:  
[chrysler.ca](http://chrysler.ca)

Chrysler is a registered trademark of FCA US LLC.

[CHRYSLER.CA/1.800.361.3700](http://CHRYSLER.CA/1.800.361.3700)